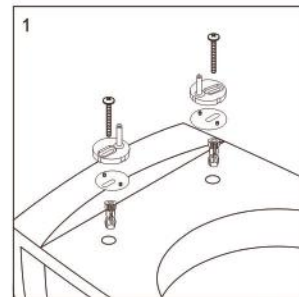
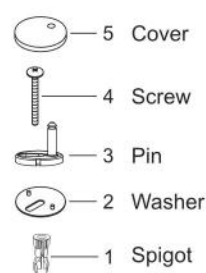
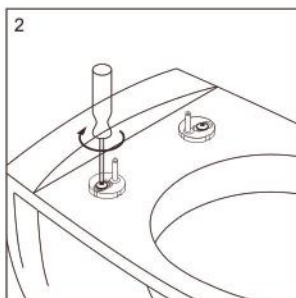


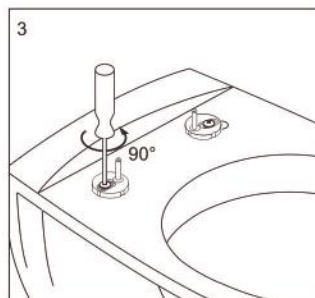
Soft Close Toilet Seat Installation Instructions



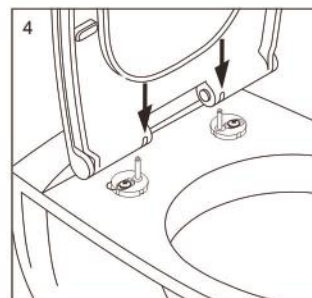
Insert the hinges into the toilet.



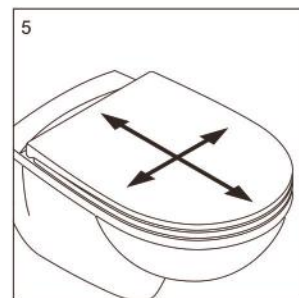
Tighten the screws in a clockwise direction (do not over tighten)



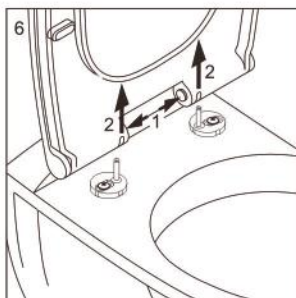
Untighten the screws a bit by turning them 90° in a anti-clockwise direction this will allow you to align the seat.



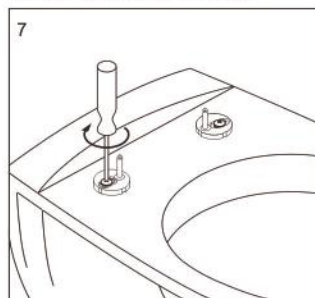
Clip on the toilet seat.



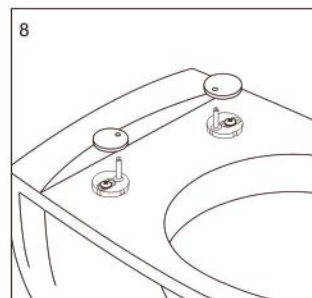
Align the toilet seat with ceramic bowl.



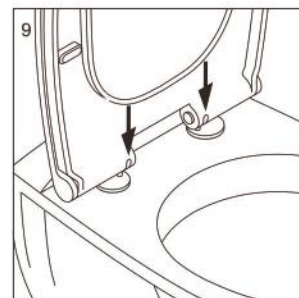
Take off the toilet seat by pressing both push buttons.



Tighten the screws in a clockwise direction



Place the cover over the hinges



Clip on the toilet seat and cover.